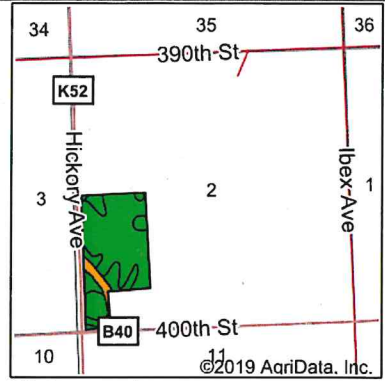
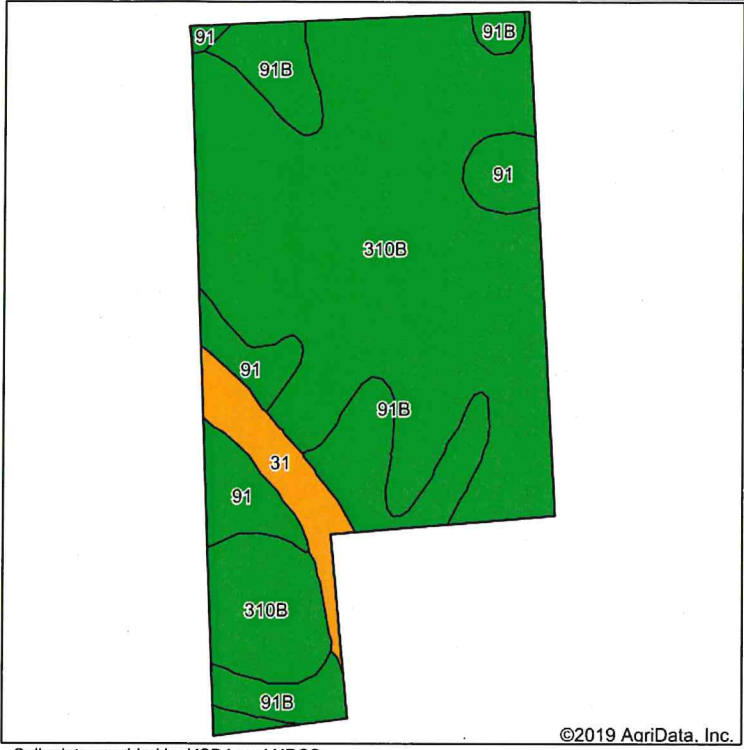


Soils Map



State: Iowa
 County: Sioux
 Location: 2-95N-45W
 Township: West Branch
 Acres: 61.87
 Date: 9/3/2019

TRACT I

BEYER
 AUCTION & REALTY
 SIOUX CENTER, IA
 712-722-4315
 WWW.BEYERAUCTIONREALTY.COM

Maps Provided By:
surety
 CUSTOMIZED ONLINE MAPPING
 © AgriData, Inc. 2019 www.AgriDataInc.com



Soils data provided by USDA and NRCS.

©2019 AgriData, Inc.

Area Symbol: IA167, Soil Area Version: 28

Code	Soil Description	Acres	Percent of field	CSR2 Legend	Non-Irr Class *c	CSR2**	CSR	*n NCCPI Soybeans
310B	Galva silty clay loam, 2 to 5 percent slopes	44.10	71.3%		Ile	95	67	74
91B	Primghar silty clay loam, 2 to 5 percent slopes	8.83	14.3%		Ile	95	75	76
91	Primghar silty clay loam, 0 to 2 percent slopes	5.55	9.0%		Iw	100	77	76
31	Afton silty clay loam, 0 to 2 percent slopes, occasionally flooded	3.39	5.5%		Ilw	80	69	65
Weighted Average						94.6	69.1	*n 74

**IA has updated the CSR values for each county to CSR2.
 *n: The aggregation method is "Weighted Average using major components"
 *c: Using Capabilities Class Dominant Condition Aggregation Method

Soils data provided by USDA and NRCS.