

Tuesday, June 26, 2018 at 7:00 PM

Directions: From Calumet, Exit 115 off of I-40, North to SH66, West on 66 two miles to Maple Road. South on Maple ¼ mile to Tract 2, South under I-40 to Tract 1, Across road from Maple School.

CANADIAN COUNTY LAND AUCTION

Tract 1: 73 Acres of grass and farm land directly across the road from Maple School. Lots of building sites, good fence, pond, lots of wildlife. Hard surface road.

Tract 2: 42 Acres M/L , All grass, lots of trees, pond, lots of deer and turkey, great building site. Hard surface road, native grass

To view this property call Kamara Gatz 779-0618

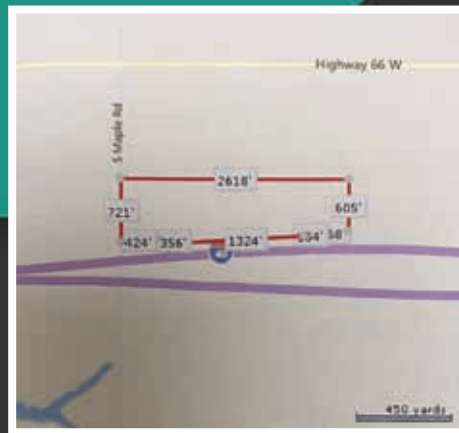
Real Estate Terms:

10% down day of sale. Balance due upon delivery of marketable title. All information has been taken from sources believed reliable. Buyers should satisfy themselves as to any inspections prior to bidding. Seller can reject any or all bids. Financing must be in place prior to bidding. Any announcement day of sale supersedes all verbal and print advertising.

Possession on August 1, 2018



Tract 1



Tract 2

KEN CARPENTER AUCTION, LLC

Your Real Estate & Personal Property Auction Specialists

Ken Carpenter and Tami Utsler are both realtors and auctioneers • "Let us turn your assets into cash!"

Call Ken at **405-620-1524** • Call Tami at **405-406-5235**

www.kencarpenterauction.com Broker Ken Carpenter

KEN CARPENTER AUCTION, LLC.

14800 SW 104TH ST.
MUSTANG, OK 73064-9740

**CALL KEN CARPENTER
AT (405) 620-1524**

WWW.KENCARPENTERAUCTION.COM
SALES@KENCARPENTERAUCTION.COM

Tuesday, June 26, 2018 at 7:00 PM



Tract 1:

73 Acres of grass and farm land directly across the road from Maple School. Lots of building sites, good fence, pond, lots of wildlife. Hard surface road.

Tract 2:

42 Acres M/L , All grass, lots of trees, pond, lots of deer and turkey, great building site. Hard surface road, native grass

KEN CARPENTER AUCTION, LLC

Your Real Estate & Personal Property Auction Specialists

Ken Carpenter and Tami Utsler are both realtors and auctioneers • "Let us turn your assets into cash!"

Call Ken at **405-620-1524** • Call Tami at **405-406-5235**

www.kencarpenterauction.com Broker Ken Carpenter