

LAND AUCTION

SATURDAY, JULY 28TH AT 1:00PM

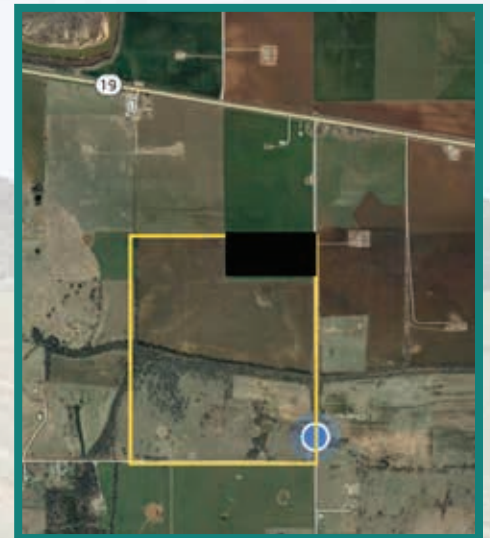


Seller: Jonathan Rinn and his sister, Meghan Rinn

Auction Location: From Hwy 6 in Lindsey go 3 miles East of Lindsey on Hwy 19 to N CR 3060 then go South 1 mile to E CR 1520 (farm sits NW of the intersection of N CR 3060 & E CR 1520). Look for signs.

Selling: 180 acres m/l (Surface rights only)

Legal: 18-4N-3W



Auctioneers Note

If you've been looking for a farm here is your chance. 180 m/l acres of grass land and crop ground. Knee deep in Bermuda and native grass, live creek, great bottom ground and timber.

This is a beautiful place.
Drive by anytime prior to auction date to view the property.

KEN CARPENTER AUCTION, LLC

Your Real Estate & Personal Property Auction Specialists
Ken Carpenter and Tami Utsler are both realtors and auctioneers
"Let us turn your assets into cash!"

Call Ken at **405-620-1524** • Call Tami at **405-406-5235**
www.kencarpenterauction.com Broker Ken Carpenter

KEN CARPENTER AUCTION, LLC.

14800 SW 104TH ST.
MUSTANG, OK 73064-9740

**CALL KEN CARPENTER
AT (405) 620-1524**

WWW.KENCARPENTERAUCTION.COM
SALES@KENCARPENTERAUCTION.COM

Saturday, July 28th at 1:00pm



Real Estate Terms:

Terms: 10% down day of sale. Balance due upon delivery of marketable title. All information has been taken from sources believed reliable. Buyers should satisfy themselves as to any inspections prior to bidding. Seller can reject any or all bids. Financing must be in place prior to bidding. Any announcement day of sale supersedes all verbal and print advertising.

KEN CARPENTER AUCTION, LLC

Your Real Estate & Personal Property Auction Specialists • Ken Carpenter and Tami Utsler are both realtors and auctioneers
"Let us turn your assets into cash!"

Call Ken at **405-620-1524** • Call Tami at **405-406-5235**
www.kencarpenterauction.com Broker Ken Carpenter