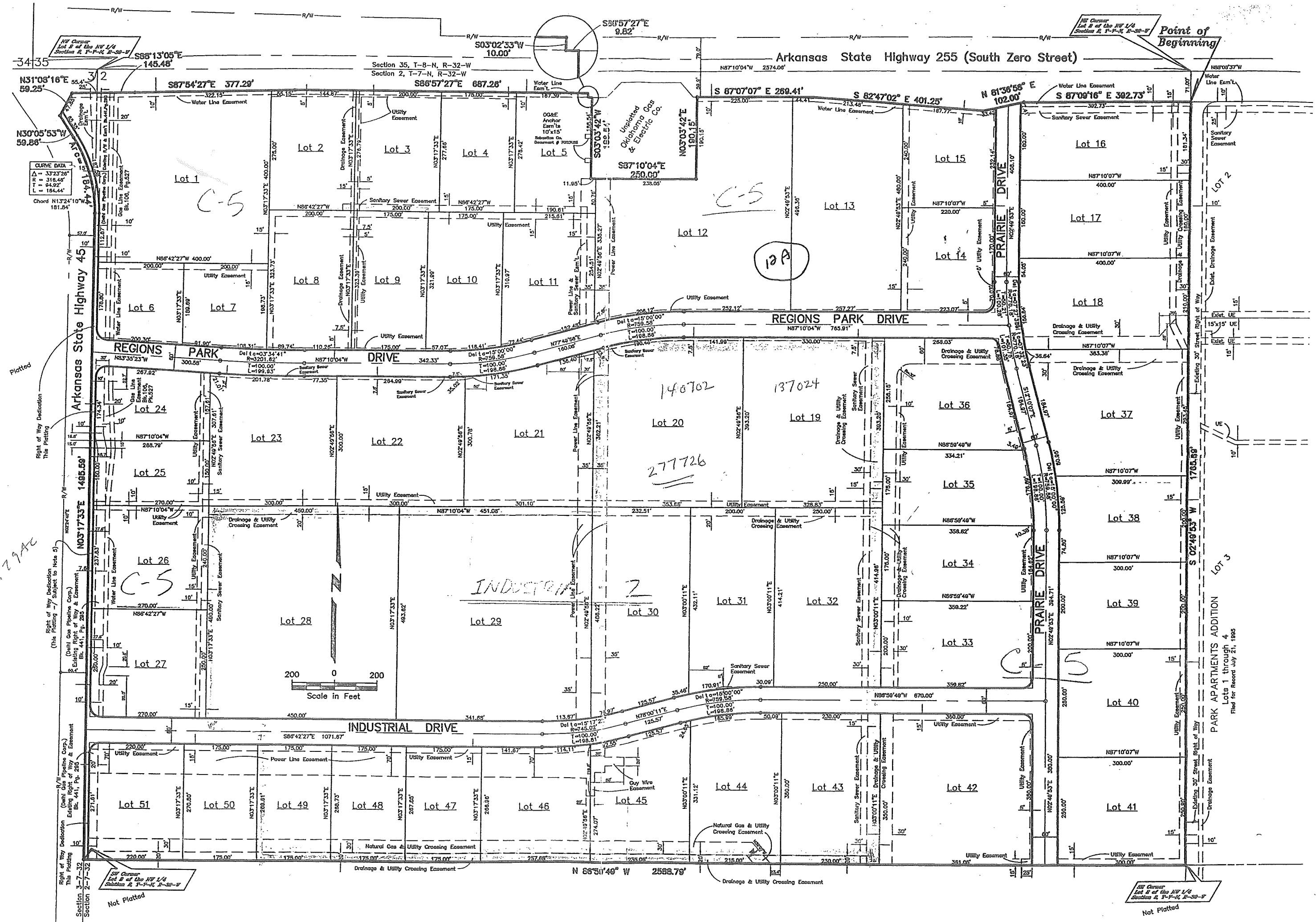


Whitt-REGIONS\Regions_Plat_All.dwg Tue Jun 06 11:25:23 2000 .MIKE..Copyright by Mickle Wagner Coleman, Inc.

360 x
580



CLERE DATA
 1 = 37.23' 25'
 2 = 118.48'
 3 = 84.92'
 4 = 184.44'
 Chord N13°24'10\"

Right of Way Dedication
 This Platting
 (This Platting is subject to Note 5)
 (Deht Gas Pipeline Corp.)
 Existing Right of Way & Easement
 Bl. 441, Pg. 285

Right of Way Dedication
 This Platting
 (Deht Gas Pipeline Corp.)
 Existing Right of Way & Easement
 Bl. 441, Pg. 285

Not Plotted

PARK APARTMENTS ADDITION
 Lots 1 through 4
 Filed for Record July 21, 1985