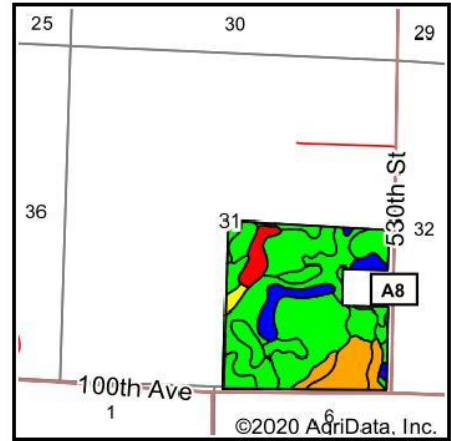
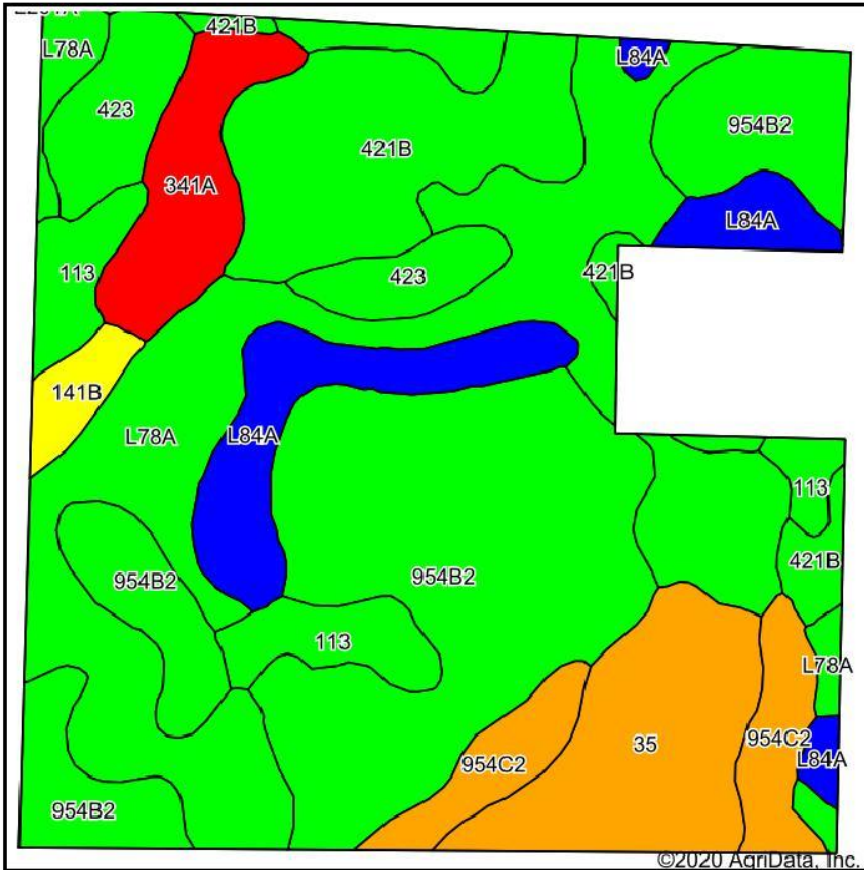


# Soils Map



State: **Minnesota**  
 County: **Yellow Medicine**  
 Location: **31-113N-39W**  
 Township: **Posen**  
 Acres: **145.24**  
 Date: **8/24/2020**



Soils data provided by USDA and NRCS.

Area Symbol: MN173. Soil Area Version: 15									
Code	Soil Description	Acres	Percent of field	PI Legend	Non-Irr Class *c	Productivity Index	Cor n	Soybeans	*n NCCPI Soybeans
954B2	Amiret-Swanlake loams, 2 to 6 percent slopes	42.52	29.3%	Green	IIe	92			82
L78A	Canisteo clay loam, 0 to 2 percent slopes	35.74	24.6%	Light Green	IIw	93			81
421B	Amiret loam, 2 to 6 percent slopes	16.02	11.0%	Light Green	IIe	98			84
35	Blue Earth silt loam	11.33	7.8%	Orange	IIIw	77	141	42	91
L84A	Glencoe clay loam, 0 to 1 percent slopes	10.51	7.2%	Blue	IIIw	86			76
113	Webster clay loam, 0 to 2 percent slopes	7.08	4.9%	Light Green	IIw	93			82
423	Seaforth loam, 1 to 3 percent slopes	7.08	4.9%	Light Green	IIs	95			86
954C2	Storden-Ves complex, 6 to 10 percent slopes, moderately eroded	6.54	4.5%	Orange	IIIe	77			74
341A	Arvilla sandy loam, 0 to 2 percent slopes	6.50	4.5%	Red	IIIs	44	81	24	24
141B	Egeland loam, 2 to 6 percent slopes	1.92	1.3%	Yellow	IIIe	68	124	37	53
<b>Weighted Average</b>						<b>88.4</b>	<b>16.3</b>	<b>4.8</b>	<b>*n 79.1</b>

\*n: The aggregation method is "Weighted Average using all components"

\*c: Using Capabilities Class Dominant Condition Aggregation Method

Soils data provided by USDA and NRCS.