

**PRIME MULTI-PARCEL RENVILLE COUNTY FARMLAND**

# Auction

**LIVE ON-SITE AUCTION WITH ONLINE BIDDING**

**Sacred Heart, MN • Monday, November 23, 2020 • 11:00 a.m.**

**±117.4 Acres located in Section 14 & 15, Wang Township, Renville County, MN**

### LAND LOCATION:

Sacred Heart, MN: Three miles west on Hwy 212, 4½ miles north on Renville Co. Rd 10. East and west side of the road.

*Watch for Henslin Auction Signs!*

**Parcel 1:** ±40.78 acres located in Section 15, Wang Twp, T-116-N, 38W  
C.P.I. Rating = 89.9

**Parcel 2:** ±76.62 acres located in Section 14, Wang Twp, T-116-N, 38W,  
C.P.I. Rating = 74.6

### AUCTION LOCATION:

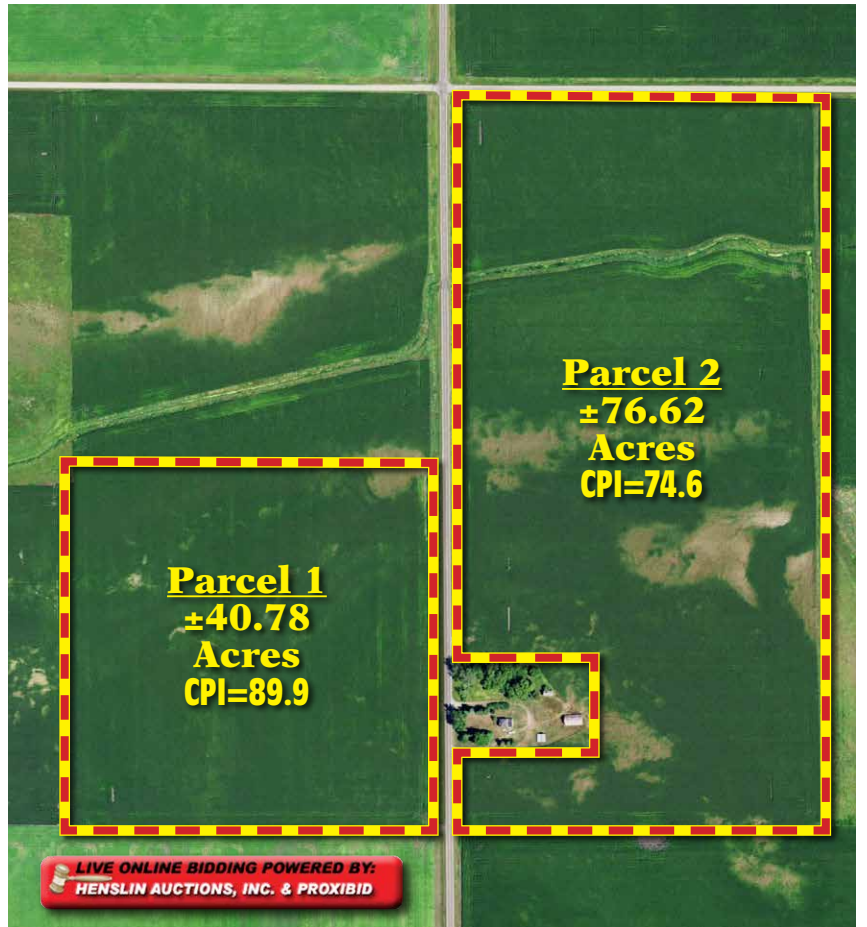
Sacred Heart Community Center,  
309 1st Ave Sacred Heart, MN 56285

*Watch for Henslin Auction Sign!*

**LAND HAS BEEN SURVEYED!**

**TAR ROAD ACCESS!**

**READY FOR THE 2021  
GROWING SEASON!**



## Conrad & Blenda Alstad Estate



Bird Island, MN (320) 365-4120

Call Today For Your Auction!



**320-365-4120**

Allen Henslin 65-57  
LaDon Henslin  
Brad Dallmann  
Frank Roering  
REAL ESTATE AGENT  
Laura Posl

Henslin Real Estate and Land, LLC Broker • Lic. #40452768

FOLLOW US



**CALL HENSLIN AUCTIONS FOR LAND BOOKLET TODAY! (320) 365-4120**

**Auction Terms:** To attend auction and receive a bidding number, buyers must present auction company with certified funds of \$30,000. These funds will be require as non-refundable earnest monies for each parcel at the signing of the purchase agreement immediately following the auction. Possession will be granted after the 2020 crop has been removed. Buyer's premium will apply. Spencer Kvam from Holstrom & Kvam to handle closing on behalf of the sellers. Closing will be on or before Tuesday, January 12, 2021. For more information, aerial drone video and pictures, visit us at [www.henslinauctions.com](http://www.henslinauctions.com) or call (320) 365-4120.

**[www.henslinauctions.com](http://www.henslinauctions.com)**

Design and Print provided by [greghepola@yahoo.com](mailto:greghepola@yahoo.com)