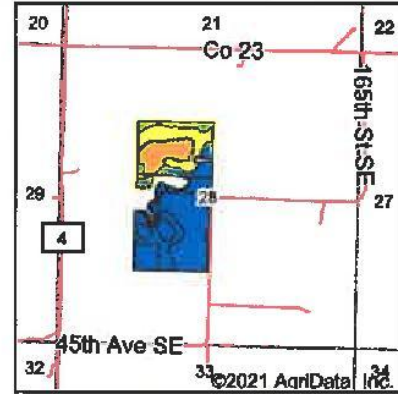
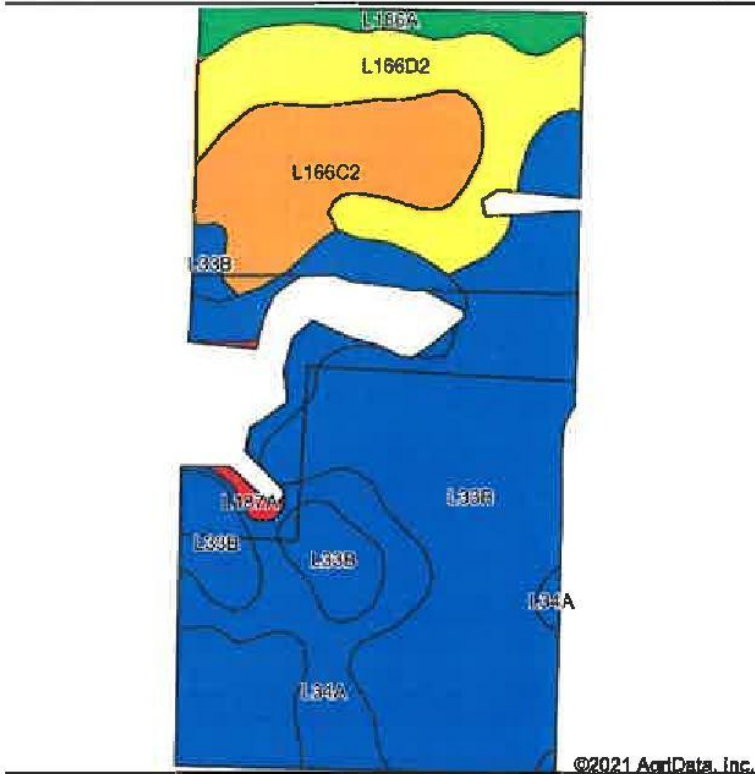


# Soils Map



State: **Minnesota**  
 County: **Kandiyohi**  
 Location: **28-119N-33W**  
 Township: **Gennessee**  
 Acres: **73.62**  
 Date: **9/17/2021**



Soils data provided by USDA and NRCS.

Area Symbol: MN067, Soil Area Version: 19

Code	Soil Description	Acres	Percent of field	PI Legend	Non-Irr Class *c	Productivity Index	Bromegrass alfalfa	Bromegrass alfalfa hay	Com	Reed canarygrass	Soybeans	Spring wheat	*n NCCPI Soybeans
.33B	Kandiyohi clay, 2 to 5 percent slopes	37.77	51.3%	<span style="color: blue;">■</span>	Ile	90	5	3.8	165		50	49	60
.34A	Cosmos silty clay, 0 to 2 percent slopes	11.88	16.1%	<span style="color: blue;">■</span>	Iiw	81	4.9	3.2	148	5.5	45	49	60
.166D2	NewLondon-Strout complex, 12 to 18 percent slopes, moderately eroded	11.32	15.4%	<span style="color: yellow;">■</span>	Ive	64	3.8	2.8	117		35	38	45
.166C2	NewLondon-Strout complex, 6 to 12 percent slopes, moderately eroded	9.45	12.8%	<span style="color: orange;">■</span>	Ile	77	4.5	3.4	141		42	44	49

Code	Soil Description	Acres	Percent of field	PI Legend	Non-Irr Class *c	Productivity Index	Bromegrass alfalfa	Bromegrass alfalfa hay	Com	Reed canarygrass	Soybeans	Spring wheat	*n NCCPI Soybeans
.186A	Danielson-Danielson, overwash complex, 1 to 4 percent slopes	2.74	3.7%	<span style="color: green;">■</span>	Iiw	93	5	3.8	170		51	49	61
.187A	Klossner and Lura soils, ponded, firm substratum, 0 to 1 percent slopes	0.46	0.6%	<span style="color: red;">■</span>	VIIiw	5							5
<b>Weighted Average</b>						<b>82.5</b>	<b>4.7</b>	<b>3.5</b>	<b>151</b>	<b>0.9</b>	<b>45.6</b>	<b>46.4</b>	<b>*n 58</b>

\*n: The aggregation method is "Weighted Average using all components"  
 \*c: Using Capabilities Class Dominant Condition Aggregation Method